

Feature -

- bi-color LED illuminated available
- SPST, lock / non-lock function

Application -

- computer products
- office appliance
- communication equipments

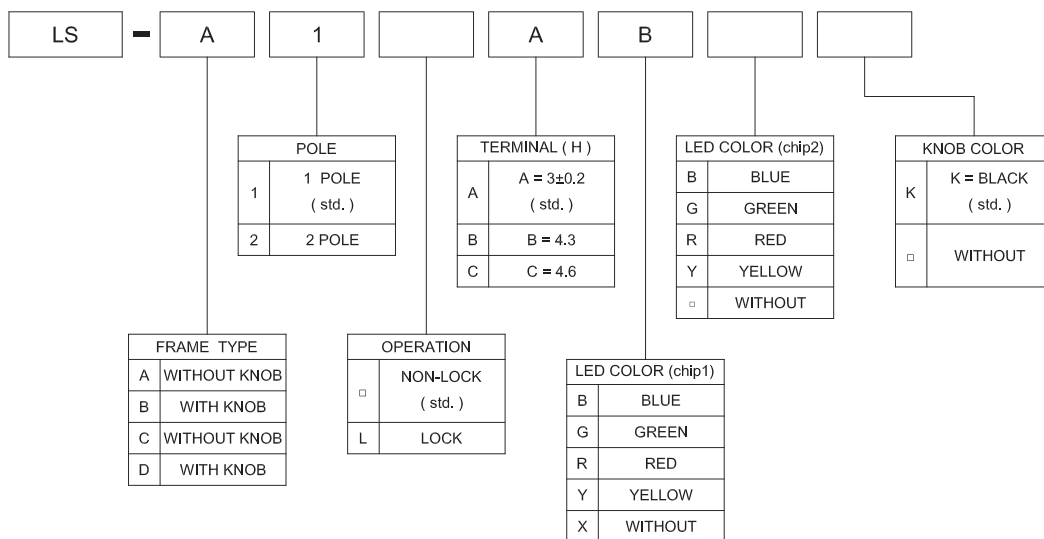
► SPECIFICATIONS

SWITCH SPECIFICATIONS	
POLE - POSITION	Momentary Type , LOCK Type with LED
CONTACT RATING	36 V DC , 0.2 A
CONTACT RESISTANCE	40 mΩ MAX. 1.5 V DC ; 100 mA , by Method of Voltage DROP
INSULATION RESISTANCE	100 MΩ MIN. 500 V DC
DIELECTRIC STRENGTH	Breakdown is not Allowable ; 500 V AC for 1 Minute
OPERATING FORCE	NON-LOCK TYPE : 200 ± 100 gf LOCK TYPE : 300 ± 100 gf
OPERATING LIFE	10,000 cycles
OPERATING TEMPERATURE RANGE	-20°C ~ 70°C
TOTAL TRAVEL	FULL TRAVEL : 2.2 ± 0.3 mm CONTACT TRAVEL : 1.6 ± 0.3 mm

LED SPECIFICATIONS		Unit	Value / LED Color			
ATTENTION (+) ○ — (LED symbol) — ○ (-) LEDs are Electrostatic Sensitive devices			Blue	Green	Red	Yellow
FORWARD CURRENT	If	mA	20	20	20	20
REVERSE VOLTAGE	Vr	V	5.0	5.0	5.0	5.0
REVERSE CURRENT	Ir	μA	10	10	10	10
FORWARD VOLTAGE@20mA	Vf	V	3.3-4.0	2.1-2.5	2.0-2.5	2.0-2.5
LUMINOUS INTENSITY@20mA	Iv	mcd	1300	700	900	700

■ Physical and electrical information of LED will be provided upon customer's request on switches .

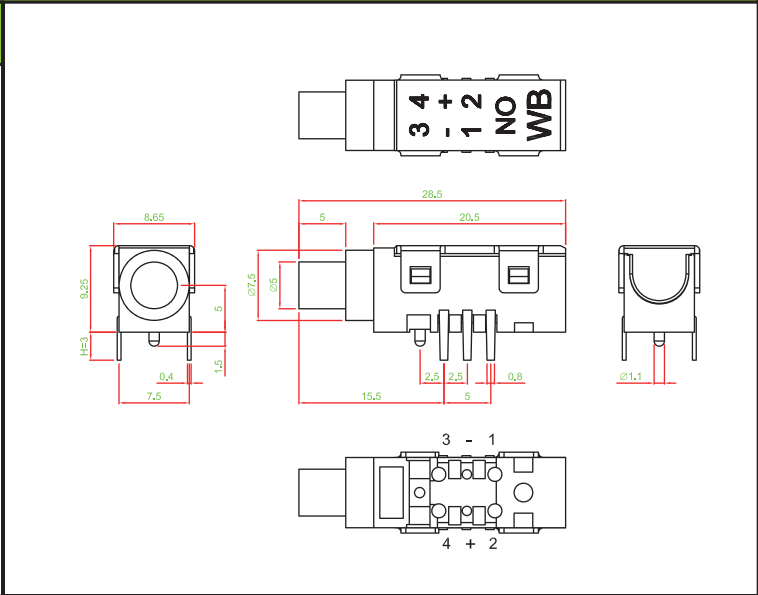
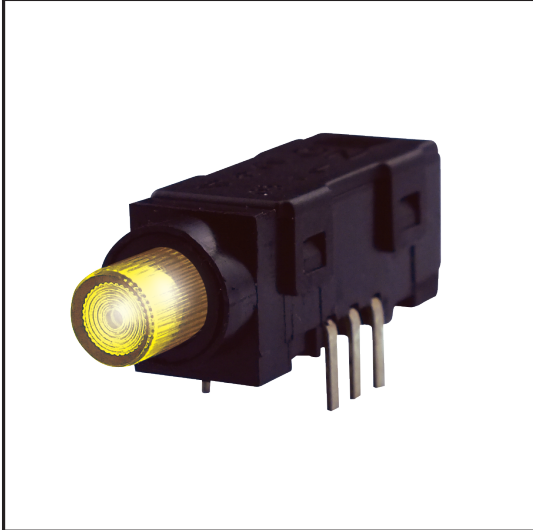
► HOW TO ORDER



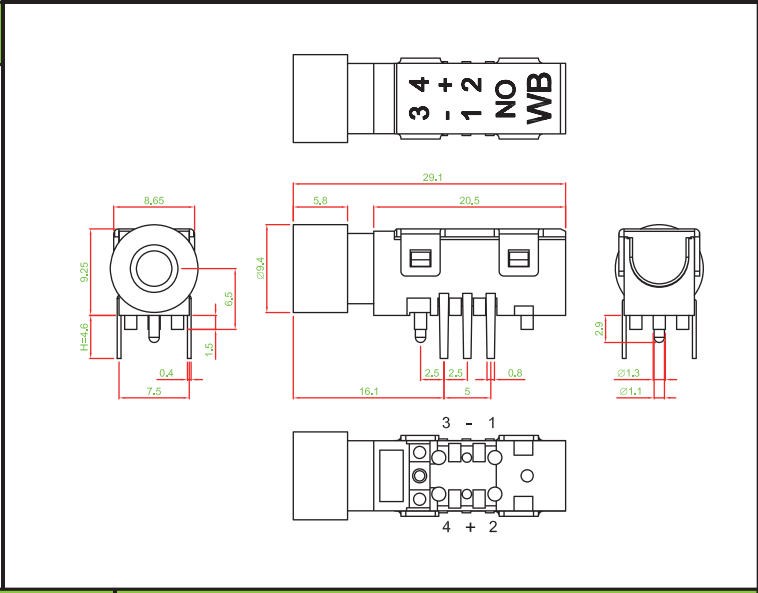
LS SERIES
LED PUSH BUTTON SWITCH

DIMENSION

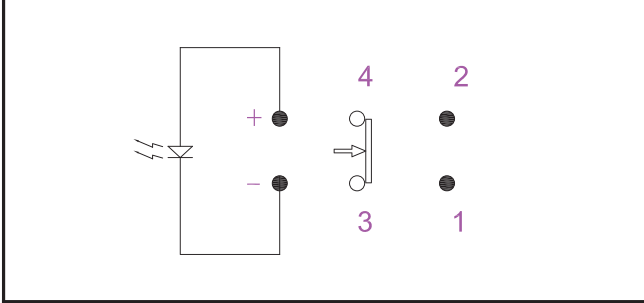
LS - A1A □ □



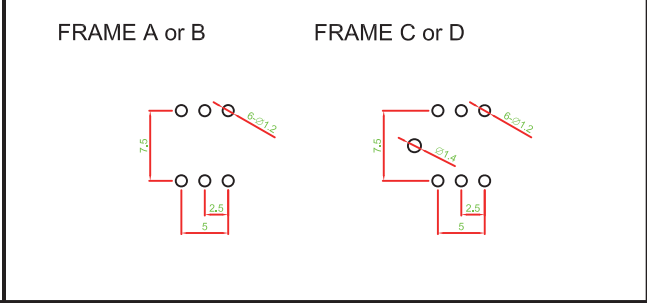
LS - D1C □ □ K



CIRCUIT



P.C.B LAYOUT



MATERIAL

- COVER : PA + GF
- BASE FRAME : PA + GF
- ACTUATOR : PA + GF
- TERMINAL : SILVER PLATING / GOLD PLATING